



UMNYANGO WEZANGAPHANDLE NOKUBAMBISANA

**IMANUALI
NGOKUQHUTSHEKISELWA PHAMBILI
KOMTHETHO WOKUFINYELELEKA KOLWAZI
WESI-2 WONYAKA WE-2000
EBUKEZWE NGONYAKA WE-2022**

**IMANUWALI NGOKUQHUTSHEKISELWA PHAMBILI
KOMTHETHO WOKUFINYELELEKA KOLWAZI
WESI-2 WONYAKA WE-2000
EBUKEZWE NGODESEMBA 2022**

**YAFAKWA ULWAZI OLUSHA
YIGATSHA LOKUPHATHWA KWAMAREKHODI**

www.dirco.gov.za

OKUQUKETHWe

	IKHASI
1. ISINGENISO	4
2. UKWAKHEKA NEMISEBENZI YENHLANGANO 2.1 Inhlosombono 2.2 Intshisekelo 2.3 Izinhlosongqangi ezibalulekile 2.4 Amagugu 2.5 Ukwakheka 2.6 Umfanekiso odwetshiwe wokwakheka	5
3. IMININGWANE YOKUXHUMANA 3.1 Izindawo zosizo zazo izicelo zolwazi 3.2 Ulwazi loMgcinilwazi 3.3 OSekela-Mgcinilwazi	9
4. UMHLAMHLANDLELA NGOKUTHI USETSHENZISWA KANJANI UMTHETHO 4.1 Ulwazi olungadingeka 4.2 Izinkambiso zezicelo 4.3 Izinkambiso zokukhalaza kwangaphakathi zokuphikisa ukunqatshwa kokufinyeleleka olwazini 4.4 Izimali ezikhokhwayo 4.5 Isicelo esenzelwa omunye umuntu 4.6 Isaziso ngokudluliswa	12
5. UKUFINYELELEKA KUMAREKHODI 5.1 Ukudalula ngokuzithandela nokutholakala ngokuzenzakalelayo kwamarekhodi athile 5.2 Ulwazi olufanele lucelwe ngokusemthethweni	14
6. OKUNYE 6.1 Ukufakwa kolwazi Olusha 6.2 Ukutholakala kweManuwali	19
7. ISHEDULI YOKU-1 Izimali ezikhokhwayo ezimisiwe kanye neminingwane yasebhange	20
8. ISHEDULI YESI-2 Amafomu amisiwe okufinyeleleka kumarekhodi	22

1. ISINGENISO

IsaHluko sama-32(1) soMthethosisekelo weRiphabhlikhi YaseNingizimu Afrika, uMthetho we-108 wonyaka we-1996 (uMthethosisekelo) ubeka ukuthi wonke umuntu unelungelo lokufinyeleleka kunoma iluphi ulwazi olugcinwe uhlaka lukahulumeni noma lwangasese oludingekayo ukuze kusetshenziswe ilungelo noma kuvikelwe nanoma iliphi ilungelo kanye nokuthi iqoqomthetho likazwelonke lifanele lenziwe umthetho ukuze leli lungelo lisebenze .

UMthetho Wokugququzela Ukufinyeleleka Kolwazi Wonyaka (i-PAIA), wesi-2 wonyaka we-2000, wenza ukuba kusebenze leli lungelo lomthethosisekelo futhi waqala ukusebenza mhla zi-9 Mashi 2001. Inhloso yalo Mthetho ngukugxilisa isiko lobusobala kanye nokuziphenduela kuzinhlaka zikahulumeni kanye nezangasese futhi nokukhuthaza ngokubonakalayo umphakathi lapho abantu baseNingizimu Afrika befinyeleleka olwazini ngempulelelo ukuze bakwazi ukusebenzisa baphinde bavikelele ngokuphelele amalungelo abo.

NgokoMthetho, uMqondisi-Jikelele woMnyango Wezangaphandla Nokuphatha Ngokubambisana unguMgcinilwazi woMnyango. UMqondisi -Jikelele uqoke uSekela-Mgcinilwazi emqokela igatsha negatsha elingaphakathi eMnyangweni.

IHhovisi loMqondisi-Jikelele lizosebenza njengendawo yosizo yezicelo zolwazi.

Ngokwesahluko se-14 se-PAIA uhlaka lukahulumeni lufanele lube nemanuwali echaza kwezinye izinto imisebenzi kanye, ne-indekhsi yamarekhodi agcinwe uhlaka lukahulumeni.

Inhloso yale Manuwali ngukwenza ukuba kusebenze imibandela yesahluko se-14 kanye nokuvumela amalungu omphakathi ukuba azejwayeze izinkambiso ezizolandelwa ukuze kufinyeleleke kumarekhodi angcinwe nguMnyango Wezangaphandle Nokubambisana.

2. IMISEBENZI KANYE NOKWAKHEKHA KWENHLANGANO

<p>2.1 INHLOSOMBONO</p>	<p>Inhlosombono yoMnyango Wezangaphandle Nokubambisana (i-DIRCO) ngokuba ngungqa phambili kanye neZwekazi Lase-Afrika, elinempumelelo, elinoxolo, elentando yeningi, elingacwasi ngokobuhlanga, elingacwasi ngokobulili futhi elibamba iqhaza emhlabeni ngokungenzeleli nangokulingana.</p>
<p>2.2 INTSHISEKELO</p>	<p>Intshisekelo ye-DIRCO ngukwakha, ukuhlela, ukusebenzisa nokuphatha inqubomgomo yamazwe angaphandle yeNingizimu Afrika kanye nezinhlelo zobudlelwana bamazwe ngamazwe, ukuqhubekisela phambili ukunaka kukazwelonke namagugu aseNingizimu Afrika kanye nokuVuselelwa Kobuntu Bama-Afrika (kanye nokwakha umhlaba ongcono wabo bonke abantu).</p>
<p>2.3 IZINHLOSONGQANGI EZIBALULEKILE</p>	<p>Izinhlosongqangi ezibalulekile zoMnyango Wezangaphandle Nokubambisana:</p> <ul style="list-style-type: none"> • Ngukusebenzisa ukuxoxisana okuphakathi kwamazwe amabili kanye nokuphakathi kwamazwe amaningi ukuvikela nokukhuthaza ukunaka kanye namagugu kazwelonke eNingizimu Afrika. • Ukuba kanye nokuhlela ubudlelwano bamazwe neNingizimu Afrika kanye nokuqhubekisela phambili izinhloso zenqubomgomo yayo yamanye amazwe • Ukuqapha ukuthuthuka kwamazwe ngamazwe kanye nokweluleka uhulumeni ngenqubomgomo yamanye amazwe kanye neminye imidanti tyasekhaya ehlobene nalokhu • Ukuvikela ukuzimela nesithunzi sendawo seNingizimu Afrika • Ukuba nendima ekwakhiweni komthetho wamazwe omhlaba kanye nokwenza ngono ukuhlonishwa kwemibandela yawo • Ukugqugquzela izingxoxo eziphakathi kwamazwe ukuze kuvikelwe uhlelo lamazwe omhlaba olusekelwe ngemithetho • Ukugcina umnyango ophethwe isimanje, oyimpumelelo futhi owenza kahle • Ukuhlinzeka ngezinsizo zamanxusa ebantweni baseNingizimu Afrika abaphesheya • Ukuhlinzeka ngosizo loMbuso WaseNingizimu Afrika Lwephrothokholi oluzezingeni lomhlaba nolukhethekile.

2.4 AMAGUGU

UMnyango Wezangaphandle Nokubambisana ubambebele kula magugu alandelayo:

- Ukushisekela izwe
- Ukwethembeka
- Ukuzinikela
- Ubuntu
- I-Batho Pele
- Amagugu omthethosisekelo (Isiqephu se-10)

2.5 UKWAKHEKA

UKwakheka kwenziwe:

Ihhovisi Likangqongqoshe,

Ihhovisi loMqondisi-Jikelele, kanye namaGatsha ayishumi abizwa ngokuthi:

Ukuphathwa Kwenhlangano

Ihhovisi Elikhulu Lemisebenzi

Ukuxoxisana Nemiphakathi Yakwamanye Amazwe

Iphorthokholi Yombuso kanye Nezinsizo Zamanxusa

I-Afrika

I-Asia ne-Middle East

Ama-Americas ne-Caribbean

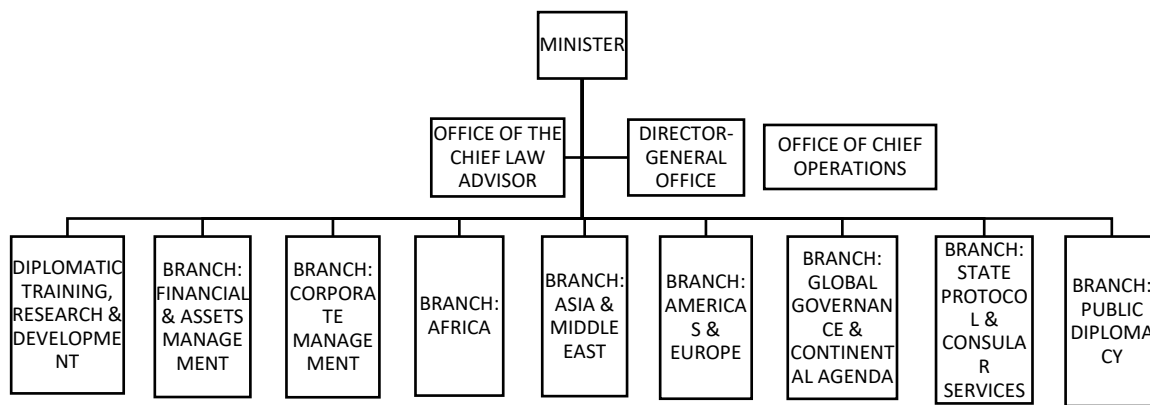
Ukuphathwa Komhlaba kanye ne-Ajenda Yamazwekazi

Ukuphathwa Kwezezimali Nempahla

Ukuqeqeshwa, Ucwango Kanye Nokuthuthuka Kokuxoxisana Nemiphakathi

Yakwamanye Amazwe

2.6 Umfanekiso odwetshiwe wokwakheka



3. IMININGWANE YOKUXHUMANA

3.1 Izindawo zosizo zazo zonke izicelo zolwazi:

UMgcinilwazi

UMqondisi-Jikelele

UMnyango Wezangaphandle Nokubambisana

Private Bag x152

Pretoria

0001

Kuqondiswe ku-: UMnu RP Nchabeleng SE4-01-052
 Ukuphathwa Kwamarekhodi SE4-01-068
 UMnu CP Ravhengani
 Ukuphathwa Kwamarekhodi SE4-01-053

Imibuzo: UMnu NM Tshirado
 Ukuphathwa Kwamarekhodi SE4-01-066
 Ucingo. 012 351 0831
 paia@dirco.gov.za

3.2 ULWAZI LOMGCINILWAZI	
Ukukhethwa ngokwesikhundla	UMqondisi-Jikelele
Ikheli Leposi:	Private Bag X152 Pretoria 0001
Ucingo	(012) 351 0204
Ifeksi	(012) 329 2242
Ikheli le-imeyili:	dangorz@dirco.gov.za

3.2 OSEKELA-MGCINILWAZI

Uhlu lwamaphini ezikhulu zolwazi lunanyathiselwe ngokwehlukana njengeSengezo.

4. UMHLAHLANDLELA NGOKUTHI USETSHENZISWA KANJANI UMTHETHO

4.1 ULWAZI OLUNGACELWA

Nanoma iliphi irkhodi elikhona lolwazi olugcinwe nguMnyango Wezobudlelwa Namazwe Angaphandle kanye Nokubambisana njengoba kuceliwe.

4.2 Izinkambiso zezicelo

4.2.1 Ukufinyeleleka olwazini olusohlwini olungenhla lungacelwa ngo:-

- Ukugcwqalisa uFomu a omisiwe njengoba egaywe kuSaziso Segazethi Kahulumeni engunombolo R187 yomhla zi-15 Febhuwari 2002 (bheka isheduli yesi-2); kanye
- Nokukhokhwa kwezimali ezimisiwe njengoba zishiwo kusheduli yoku-1 yaleManuwali. Kodwa-ke, umfakisicelo odinga ukufinyelelka kwerekhodi eliqukethe ulwazi olumayelana naye uqobo akudingekile ukuba umfakisicelo akhokhe izimali yesicelo.

4.2.2 Umfakisicelo kufanele asho uma isicelo kungesekopi yerekhodi noma uma efuna ukuhlola irekhodi emahhovisi oMnyango Wezangaphandle Nokubambisana.

4.2.3 Ukufinyeleleka kolwazi olushiwo ngenhla kuyonikwa kuphela umfakisicelo ngendlela ayicelile, ngaphandle uma indlela efana nalena izothikameza ngokungafanele ukuphatha nokusebenza koMnyango Wezangaphandle Nokubambisana. noma kulimaze amarekhodi noma kunyathele ilungelo lokushicilelwe.

4.2.4 Uma ukwenzela izizathu ezibonakalayo, ukufinyeleleka kungeke kwanikezwa esicelweni ngendlela eceliwe kodwa kunganikezwa ngenye indlela, ngakho-ke imali yokufinyeleleka izobalwa ngokuhambelana nendlela umfakisicelo akade eyicelile.

4.2.5 Uma umfakisicelo engakwazi ukufunda noma ukubhala, noma enokukhubazeka, ngakho-ke kufanele enze isicelo serekhodi ngomlomo, esimweni esinjengalesi uMgcinilwazi uzogcwalisa ifomu eligcwalisela umfakisicelo futhi anike umfakisicelo ifomu eligcwalisiwe elifanana naleli.

4.2.6 Umfakisicelo kufanele akubeke kucace efomini lesicelo:

- Uma benesifiso sokuba baziswe ngocingo noma nganoma iyiphi enye indlela ngokuphumelela kwesicelo sabo.
- Isikhundla ngokomsebenzi isicelo esenziwa ngaso, esimweni lapho ulwazi lucelelwa omunye umuntu.

4.2.7 Umfakisicelo kufanele adlulisele isicelo sakhe endaweni yosizo (sibhekiswe kuMgcinilwazi uNks. C Ngubelanga, kuMnu CP Ravhengani kanye nakuMnu NM Tshirado) njengoba kukhonjisiwe ngenhla, ozobe-ke esesebenza isicelo.

4.2.8 Izicelo kufanele zisestshenzwe kungakapheli izinsuku ezingama-30. UMgcinilwazi angelula isikhathi ngezinye izinsuku ezingama-30 ngokwesahluko sama-26 uma isicelo singeke sasetshenzwa kungakapheli izinsuku zokuqala ezingama-30 futhi kuye ngokwaziswa komfakisicelo.

- 4.2.9 Ngemuva kokuba uMgcinilwazi enze isinqumo ngesicelo umfakisicerlo kufanele aziswe ngesinqumo esifana nalesi ngendlela umfakisicelo afune ukwaziswa ngayo.
- 4.2.10 Uma isicelo sihlobene nerekhodi lengxenywe yesithathu njengoba kucatshangwa kusahluke sama-34(1), sama-35(1), sama-36(1), sama-37(1) noma sama-43(1) se-PAIA, uMgcinilwazi noma uSekela-Mgcinilwazi, njengoba kunokwenzeka, ufanele athathe zonke izinyathelo ezifanele, kodwa kunoma yisiphi isimo, kungakapheli izinsuku ezingama-21 ngemuva kokuba isicelo sitholiwe, ukwazisa ingxenywe yesithathu irekhodi elimayelana nayo.
- 4.2.11 Ingxenywe yesithathu eyazisiwe, ingenza isethulo esibhaliwe noma somlomo kuMgcinilwazi noma kuSekela-Mgcinilwazi kungakapheli izinsuku ezingama-21, njengoba kunokwenzeka, isho ukuthi kungani isicelo sifanele senqatshwe noma inganikeza imvume ebhalwe phansi yokuba kudalulwe irekhodi.
- 4.2.12 UMgcinilwazi noma uSekela-Mgcinilwazi, njengoba kunokwenzeka, ufanele ngokushesha okukhoneyayo, kodwa kuleso simo kungakapheli izinsuku ezingama-30 ngemuva kokuba ingxenywe yesithathu yazisiwe, anganquma ukuvuma noma enqabe isicelo sokufinyeleleka futhi kufanele azise ingxenywe yesithathu ethintekayo kanjalo nomfakisicelo ngokwesahluke sama-49 se-PAIA, ngesinqumo sakhe.
- 4.2.13 Ingxenywe yesithathu ingafaka isikhalazo sangaphakathi iphikise isinqumo kungakapheli izinsuku ezingama-30 ngemuva kokuba isaziso sinikeziwe njengoba kushiwo ku- 4.2.12. Isikhalazo singafakwa ngokugcwalisa uFomu B.

4.3 Izinkambiso zokukhalaza kwangaphakathi zokuphikisa ukunqatshwa kokufinyeleleka olwazini

- 4.3.1 Uma ngemuva kokulandela izindingo zenkambiso ezishiwo ku-4.2 ngenhla:
- USekela-Mgcinilwazi enqaba ukunikeza ukufinyeleleka olwazini; futhi
 - ukunqaba okufana nalokhu kungenazo izizathu ezishiwo zokunqaba ezishiwo eMthethweni, uMfakisicelo angakhalaza aphikise isinqumo sikaSekela-Mgcinilwazi kuMgcinilwazi.
- 4.3.2 Uma umfakisicelo efaka isikhalazo sangaphakathi, ufomu lokukhalaza elimisiwe (uFomu B) njengoba agaywe kuSaziso Segazethi Kahulumeni engunombolo R187 yomhla zi-15 Febhuwari 2002 ufanele agcwaliswe kungakapheli izinsuku ezingama-60 kusukelela ngosuku isicelo esanqatshwa ngalo.
- 4.3.3 Uma umfakisicelo enganelisekile ngesinqumo soMgcinilwazi njengoba kushiwo ku-4.3.1 ngenhla, ngakho-ke isikhalazo kufanele sifakwe kuNgqongqoshe woMnyango Wezobudlelwa Namazwe Angaphandle kanye Nokubambisana.
- 4.3.4 UMfakisicelo angafaka isicelo sakhe eNkantolo ukuze athole isixazululo ngesinqumo sesikhalazo esithathathwe nguNgqongqoshe woMnyango Wezobudlelwa Namazwe Angaphandle kanye Nokubambisana. Uma singekho isicelo esifana nalesi kungakapheli izinsuku ezingama-30

zesinqumo, isinqumo sikaNgqongqoshe woMnyango Wezobudlelwa Namazwe Angaphandle kanye Nokubambisana. sizolandelwa.

4.4 Izimali ezikhokhwayo

Bheka isheduli yoku-1.

Umuntu oyedwa ingeniso yakhe yonyaka engadluli ama-R14 712,00 ngonyaka owodwa kanye nabantu abashadile, noma umuntu kanye nomlingani wakhe empilweni ingeniso yabo enadluli ama-R27 192,00 bakhululwe ukuba bakhokhe izimali zokufinyeleleka (ngokweSaziso Sikahulumeni R991 somhla zi-14 Okhthoba 2005).

Ukufinyeleleka kuzogodlwa kuze kube zonke izimali ezisetshenziswayo zikhokhiwe.

4.5 Isicelo esenzelwa omunye umuntu

Uma isicelo senzelwa omunye umuntu, umfakisicelo ufanele alethe ubufakazi besikhundla enza ngaso isicelo, kuze kwaneliseke uSekela-Mgcinilwazi.

4.6 Isaziso ngokudluliswa

Uma isicelo sokufinyeleleka sidluliswa, USekela-Mgcinilwazi osidlulisayo uzokwazisa ngokushesha umfakisicelo:

- Ngokudluliswa;
- Izizathu sokudluliswa; kanye
- Isikhathi isicelo okufanele sisetshenzwe ngaso.

5. UKUFINYELELEKA KUMAREKHODI

5.1 Ukudalula ngokuzithandela nokutholakala ngokuzenzakalelayo kwamarekhodi athile - Section 15

NgokoMthetho, amarekhodi athile angafinyeleleka ngaphandle kokuba umuntu enze isicelo sokufinyeleleka.

Izihloko ezilandelayo ziyatholakala ku-website yoMnyango Wezangaphandle Nokubambisana:

Mayelana noMnyango:

- Amasu Abalulekile Esikhwama Sokuvuselelwa kobu-Afrika Nokubambisana Kwamazwe Omhlaba (i-ARF) Amasu Abalulekile kanye neZinhlelo Zensebenzo Zonyaka
- Amasu abalulekile;
- Izikhungo zezindiza
- Izinhlelo Zensebenzo Zonyaka
- Izinkulumo Yesabelozimali
- Izichazi Zezinkomba Zokusebenza Zezinhlelo Zokusebenza Zonyaka
- Izichazi Zezinkomba Zokusebenza Zamasu Abalulekile
- Inhlosombono. iNtshisekelo, iZinhlosongqangi ezibalulekile, aMagugu
- Amaphrofayili nezinkulumo
- Ucingo losizo lwangemuva kwesikhathi sokusebenza kwehhovisi
- Imininingwane Yokuxhumana – Ubani ngubani kuMnyango
- IManuwali Yesahluko se-14 se-PAIA
- IsaHluko se-15 se-PAIA

Ukudedelwa ekuboshweni kanye namalungelo obudlelwano namaye amazwe (i-DIAP)

- Amafomu Esicelo Sokuqinisekiswa Kobudlelwano Namanye Amazwe
- Amafomu Esicelo Semoto Yobudlelwano Namanye Amazwe
- Isitifiketi Sokuqinisekiswa Ngabentela Sokuhambisa Impahala Kwelinye Izwe Mahhala
- Ifomu Locwaningo Mabhuku Lwepahla Yobudlelwano Namanye Amazwe
- Ifomu Leminingwane Yabasebenzi Ababuthwe Endaweni
- Ukuqinisekiswa Kwamasiginesha
- Inqubomgomo Ngokuphathwa Kwamalungelo Okudedelwa Ekuboshweni Kobudlelwano Namanye Amazwe
- USomqulu Wokwethulwa kwezinsizo we-DIAP
- Umbhalo Wesaziso se-VISA Yokuhlala Okwesikhashana
- IFomu Locwaningo-Mabhuku Lwezimoto Zobudlelwano Namanye Amazwe
- UCwaningo-Mabhuku Lwemininingwane Yokuxhumana Lwemishini

Izindaba nemicimbi

- Izitatimende zabezomsakazo
- Izinkulumo
- Ikhanda yemicimbi
- Imibuzo nezimpendulo zasephalamende
- Izaziso ngamathenda

Ubudlelwano Bamazwe Ngamazwe

- Ubudlelwano Phakathi kwamazwe Amabili
- Ubudlelwano Bamazwe Amaningi
- IzethuloZezingoxo Nemiphakathi Yakwamanye Amazwe

Ama-websites Okuthunywa kwabaseNingizimu Afrika

Ulwazi Ngamanxusa

- Ziyini Izinsizo zamanxusa
- Imininingwane yokuxhumana
- Ukuvakashela amazweni apesheya
- Ukushonela emazweni apesheya
- Ukuboshwa emazweni apesheya
- Izinsizakalo Zomthetho Zamanxusa (Iqoqomthetho Lemibhalo Esemthethweni (kaHulumeni)
- Izitifiketi zabasebenzisi
- USomqulu Wokwethulwa kwezinsizo
- Ukumelwa kwabantu baseNingizimu Afrika peshesha
- Ukumelwa kwamanye amazwe eNingizimu Afrika
- Ukuthunywa KwabaseNingizimu Afrika: Ukhomishane Wezifungo

IPhrothokholi Yombuso

- Ulwazi Jikelele Lwephrothokholi
- IzethuloZezingoxo Nemiphakathi Yakwamanye Amazwe

Ulwazi Lokuqashwa

- Amathuba Omsebenzi
- Ifomu i-Z.83

IKHASI LASEKHAYA

Ukutholakala kwezinsizo nempahla

- IHhhoVisi Lomgcinimafa Kazwelonke Lemininigo Yokubhaliswa Kwabaphakeli Ndawonye
- Ipheshana Labaphakeli
- IMininigo Yabaphakeli Bakahulumeni YehhhoVisi Lomgcinimafa
- Amafomu okubhaliswa kumininigo
- Amabhidi anikeziwe
- Izihlongozo Zokubhida Ezitholiwe
- Izimo Okubukwa kuzona (Izikhango zamathenda)
- UMthetho Nezivumelwano Zamazwe Ngamazwe

Ulwazi Labezokusakaza Nelomphakathi

- Imibiko yonyaka
- Isikhwama Sokuvuselelwa Kobu-Afrika
- Isu elibalulekile;
- UHlelo Lokusebenza Lonyaka (i-APP)
- Uhlelo Lwamasu Lwesikhwama Sokuvuselelwa kobu-Afrika (i-ARF)
- Iphephabhuku Ubuntu
- Izinyathelo nemihlahlandlela yokwenziwa ngcono kokuhlelela ukuzibandkanya kweNingizimu Afrika Namazwe Omhlaba
- Izwi lakho - Ubunxusa Bobuntu

La marekhodi kungafinyeleleka kuwo ku-website yoMnyango Wezangaphandle Nokubambisana ethi: www.dirco.gov.za

5.2 Ulwazi olufanele lucelwe ngokusemthethweni

UMnyango Wezangaphandle Nokubambisana ugcina ulwazi olumayelana nelezi zihloko ezilandelayo okufanele lucelwe ngokusemthethweni ngokomshana wesi-4.2.1 - izinhloko zamarekhodi atholakalayo angacelwa ngokwesahluko se-14 (1) [d]:

- | | |
|-------|----------------------------------------------------------------------------------------------------------------------------------------------------------------------------------------------------------------------------------------------------------------------------------------------------------------------------------------------------------------------------------------------------------------------------------------------------------------------------------------------------------------------------------------------------------------------------------------------------------------------------------------------------------------------------------------------------------------------------------------------------------------------------------------------------|
| 5.2.1 | Ukuphatha:
Izakhiwo nefenisha
Izimiso nemiyalo
Impahla
Ukuphathwa Kwezifundazwe
Imisebenzi Kahulumeni
Imisebenzi Kahulumeni
Izidingo
Imininingwane
Ukusungulwa kwamagatsha amasha/amahhovisi amasha
Ukudluliswa kwamandla ngokuthumela
Ukuqashwa Nokuhlolwa Kokusebenza
Uguquko
Ukwakheka kwenhlangano
IMibiko
Imihlangano
Ubulili, Intsha kanye Nokukhubazeka
Ukulawulwa Kwezikhala Zemisebenzi
Ukuqokwa Nokubuthelwa Emsebenzini
Ukudluliselwa Kwezinye Izikhundla Zomsebenzi (faka)
Ubudlelwano bezemisebenzi
Ukulawulwa Kwabasebenzi
Ukuphepha Kanye Nokuvikeleka Emsebenzini
Ukuphathwa Kwamathalente kanye Nokuphathwa Kwemisebenzi
Ukushicilelwa kwamathenda
Ukwakha
Imihlaba
Izimpahla
Izimoto zombuso |
| 5.2.2 | Ukuxhumana:
Ukuxhumana kwezikhungo zaseNingizimu Afrika kanye nama-
ejensi akhethekile
Ukufinyeleleka kolwazi lwezibalo
Izinkulumbo nezifundo
Izinhlelo zokuqwashisa
Ukwakhiwa kwesithombe senhlangano
Izikhhalazo
Imiklomelo |
| 5.2.3 | Amasiko:
Imibukiso
Imigubho
Amamuziyemu
Ezemibukiso yasebhayisikobhu kanye nezithombe
Amafulegi omthethosisekelo |

Izikhumbuzo
Imitapo zincwadi

5.2.4 Imidanti yezezwe:

Imihlaba
Imingcele
Amabalazwe
I-akhiyoloji
Amazwe

5.2.5 Ezezimali:

Ama-akhawunti
Ukungahambi kahle kanye nokulahlekelwa
Izabelozimali
Izintela nokukhokhiswa kwentela
Izindleko
Izimali

5.2.6 Umhlaba nezolimo:

Ezezinhlanzi
Ezamahlathi
Ezolimo
Ezezindlu

5.2.7 Imidanti yeqoqomthetho kanye nezomthetho:

Iqoqomthetho
Imidanti yomthetho yezemisebenzi
Ezokuphepha
Izivumelwano kanye/noma izivumelwano zamazwe omhlaba
Ukugunyazwa kanye/noma ukuthunywa
Amakleyimu kanye/noma nokumangala
Ukubuyeliswa kwabantu abanze amacala emazweni abawenze

kuwo

5.2.9 Izinhlango:

Izinhlango zemiphakathi, amaqembu nemigwamanda
Izinhlango

5.2.10 Ezombuswazwe:

UMongameli
USekela-Mongameli
Amanxusa/abanye abasimelayo
OKhomishane Abakhulu
Amasimele Kwezohwebo
IPhalamende
Imidanti/ubudlelwano Obuphakathi Kwamazwe Amabili
Imidanti/ubudlelwano Obuphakathi Kwamazwe Amaningi

5.2.11 Izibalo Zabantu:

Ubuzwe

5.2.12 Iphrothokholi nezamanxusa

Ukwaziswa kwamanxusa
Izincwadi zokuvakasha kanye namavisa
Ukuvakasha kombuso

	Izipho nezethulo
	Ukufuduswa
	Ukufufudukela kwamanye amazwe
	Izingxoxo namanye amazwe kanye nokumelwa kwamaxusa eNingizimu Afrika
	Amalungelo nokudedelwa kwabakwamanye amazwe
	Ukubonelelwa
	Ababaleki
	Ukuhanjiswa kwabakwamanye amazwe
	Izinsizo zamanxusa nama-ejensi
	Izivakashi
5.2.13	ISayensi Nobuchwepheshe
	Ezomkhathi
	Izitshalo kanye nocwaningo lwezitshalo
	Ucwaningo
	Amandla enyuzi
	Izinsizo zekhomyutha
5.2.14	Ukuvikeleka
	Uxolo
	Izivumelwano zokuqeda impi
	Impahla yesitha
	Imidanti yokuvikeleka
5.2.15	Umidanti Yokwenza Ubuhle
	Usizo Lokwenza Ubuhle
	Amalungelo esiNtu
5.2.16	Ezohwebo Nezimboni
	Intela yempahla ezikhumulweni
	Ezohwebo, Ezomnotho Nezimboni
5.2.17	EZokututha:
	Ezikaloliwe, Ezezikhumulo Zemikhumbi kanye Nezokuthutha
	Ukulawulwa kwezindiza
	Ukulawulwa kwemikhumbi

6. OKUNYE

6.1 Ukufakwa Kolwazi Olusha

Le manuwali izokufakwa ulwazi olusha ngokwesahluko se-14(1) soMthetho, njalo ngezikhathi ezithile ezingedluli unyaka.

6.2 Ukutholakala kweManuwali

ISimiso se-187 somhla zi-15 Febhuwari 2002 simisa kusahluko se-4(1) ukuthi uMgcini lwazi wohlaka lukahulumeni kufanele enze ukuthi le Manuwali itholakale ngale ndlela elandelayo:

- ◆ KuKhomishane YaseNingizimu Afrika Yamalungelo EsiNtu

- ◆ Kunoma iyiphi indawo yofakwa kwezinto zomthetho njengoba zicahazwa uMthetho Wendawo Yofakwa Kwezinto Zomthetho wama-54 wonyaka we-1997;
- ◆ EHhovisini lohlaka lukahulumeni, kulesi simo, loMnyango Wezangaphandle Nokubambisana, kanye
- ◆ Naku-website yohlaka lukahulumeni, kulesi simo ethi: www.dirco.gov.za
- ◆ Ukwengeza, amakopi ayatholakala kuKhomishane YaseNingizimu Afrika Yamalungelo EsiNtu

7. ISheduli yoku-1

IZIMALI EZIMISIWE

1. Imali yesicelo (isahluko sama-22 (8))	ama-R35.00
2. Imali Yokukhiqiza (isahluko se-15 (3))	
(a) Onke amafothokopi obukhulu bekhasi obungu-A4 noma ingxenye yawo ngokunjalo	amasenti angama-0.60
(b) Onke amakopi agayiwe obukhulu bekhasi obungu-A4 noma ingxenye yawo ngokunjalo agcinwe kwikhompyutha noma ngendlela kagesi noma ngohlobo olufundeka ngomshini	amasenti angama-0.40
(c) Ikopi engohlobo olufundekayo lwekhompyutha ku:-	
(i) Istifi diskhi	ama-R 5.00
(ii) Ikhompekhthi diskhi	ama-R40.00
(d) (i) Ukubhalwa phansi kwemifanekiso ebukwayo, yobukhulu bekhasi obungu-A4 noma ingxenye yawo ngokunjalo	ama-R22.00 ama-R60.00
(ii) Ukukopishwa kwemifanekiso ebukwayo	
(e) (i) Ukubhalwa phansi kwemisindo elalelwayo, obukhulu bekhasi obungu-A4 noma ingxenye yawo ngokunjalo	ama-R12.00 ama-R17.00
(ii) Ukubhalwa phansi kwemisindo erekhodiwe	

<p>3. Imali yokufinyeleleka (isahluko sama-22 (7))</p> <p>(a) Onke amafothokopi obukhulu bekhasi obungu-A4 noma ingxenye yawo ngokunjalo</p> <p>(b) Onke amakopi agayiwe obukhulu bekhasi obungu-A4 noma ingxenye yawo ngokunjalo agcinwe kwikhompyutha noma ngendlela kagesi noma ngohlobo olufundeka ngomshini</p> <p>(c) Ikopi engohlobo olufundekayo lwekhompyutha ku:- (i) Istifi diskhi (ii) Ikhompekthi diskhi</p> <p>(d) (i) Ukubhalwa phansi kwemifanekiso ebukwayo, yobukhulu bekhasi obungu-A4 noma ingxenye yayo ngokunjalo (ii) Ukukopishwa kwemifanekiso ebukwayo</p> <p>(e) (i) ubhalwa phansi kwamarekhodi emisindo elalelwayo, obukhulu bekhasi obungu-A4 noma ingxenye yayo ngokunjalo (ii) Ikophi yemisindo erekhodiwe</p> <p>(f) Izimali Zokucinga Nokulungisa Ukucingwa kwerekhodi ukuze lidalulwe, ihora ngalinye noma ingxenye yehora, kushiya ngaphandle ihora lokuqala, elidingekayo ngemfanelo ukulicinga nokulilungisa.</p> <p>(g) Imali yediphozi edingekayo Ukwenzela izinhloso zesahluko sama-22 (2) soMthetho, okulandelayo kuyasetshenziswa:</p> <p>(h) Amahora ayisithupha njengamahora okufanele adlulwe ngaphambu (i) kokukhokhwa kwediphozithi; kanye (ii) Isithathu sokukodwa semali yokufinyeleleka esifanele sikhokhwe njengediphozithi nguMfakisicelo</p>	<p>amasenti angama-0.60</p> <p>amasenti angama-0.40</p> <p>ama-R 5.00 ama-R40.00</p> <p>ama-R22.00 ama-R60.00</p> <p>ama-R12.00 ama-R17.00</p> <p>ama-R15.00</p>
<p>4. Imali Yokuposa Imali okuyiyona yona yokuposa iyokokhwa uma ikopi yerekhodi kufanele iposelwe umfakisicelo.</p>	
<p>5. Imali Yesikhalazo Akukho mali yesikhalazo okkhokhwayo</p>	

6. Imininingwane yasebhangi - Zonke izimali zikhokhwa:

Njengemali Engukheshi:

Koshaya Umshini Wemali woMnyango
UMnyango Wezangaphandle Nokubambisana
460 Soutpansberg Road, Rietondale, Pretoria 0084

NOMA

Ukukhokha nge-EFT

Imininingwane yasebhangi:

Igama lebhangi : First National Bank

Igatsha lebhangi: Pretoria Corporate

Inombolo yegatsha : 253145

Uhlobo lwe-akhawunti : Current Account

Inombolo ye-akhawunti : 62027898470

Attn : Nks C Ngubelanga

Room: SE4-01-068

460 Soutpansberg Road, Rietondale, Pretoria 0084

UMnu CP Ravhengani

Room: SE4-01-053

460 Soutpansberg Road, Rietondale, Pretoria 0084

Incazelo yokukhokha ifanele ifundwe kanje: Sale/Publication
(PAIA)

Emuva kokuba kukhokhiwe, thumelaisaziso nge-imeyili ku:-
paia@dirco.gov.za , bese ukopisha uMnu CP Ravhengani,
ngubelangac@dirco.gov.za noMnu RP Nchabeleng,
nchabelengp@dirco.gov.za

Imibuzo ngezicelo ingadluliselwa ku-MN Tshirado
kwi-imeyili ethi: tshiradon@dirco.gov.za